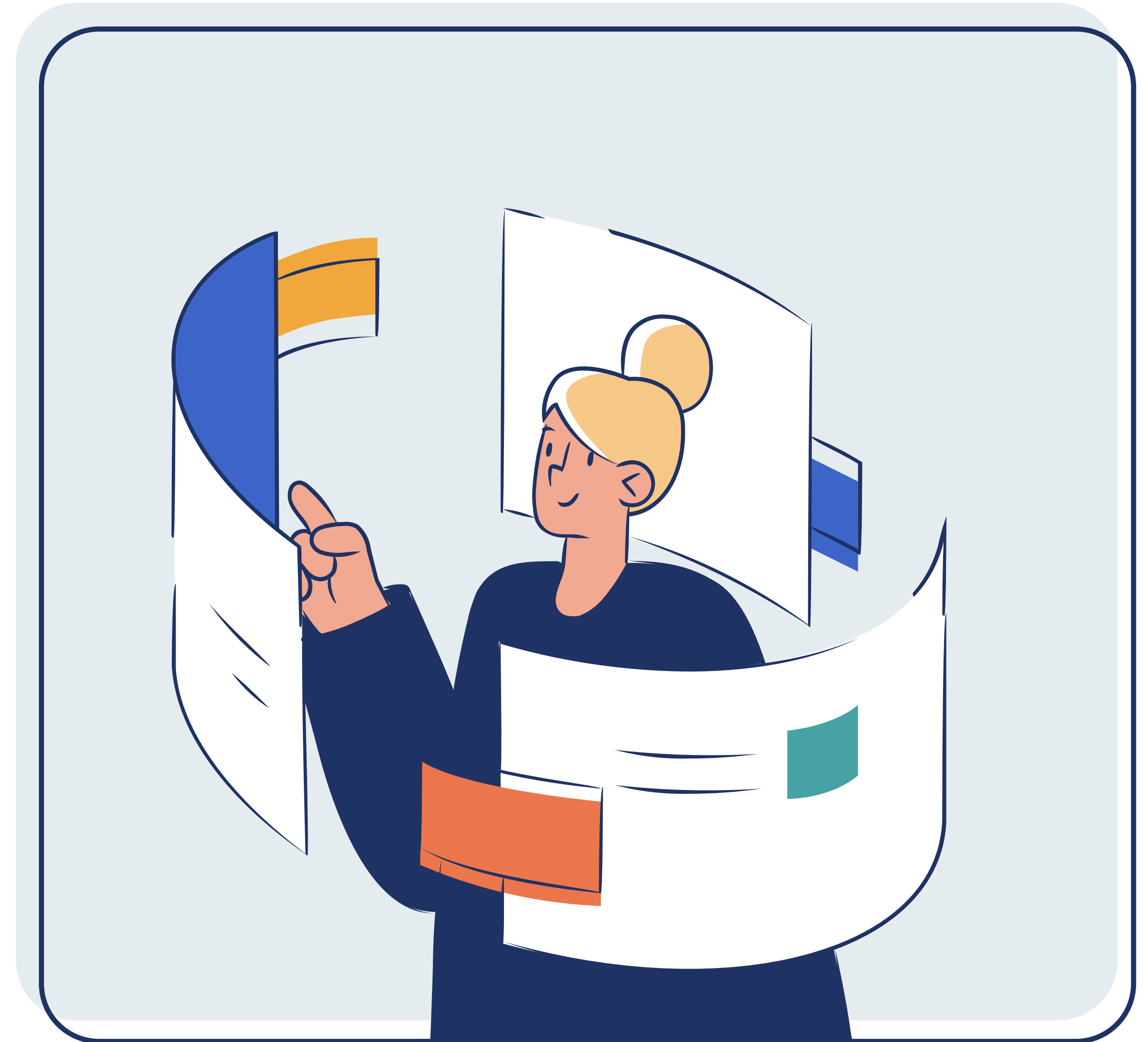


Top 10 Reasons Why Customers Choose OneStream to Get More Value From Their SAP Investment



Table of Contents

- One EPM Solution Owned by Finance 3
- Accelerate Time to Value 4
- Ultimate Agility 5
- Finally, One Source of Truth 6
- Optimize End-User Experience 7
- Transparency & Auditability 8
- Lower TCO 9
- Trusted Insights 10
- Simplify Maintenance 11
- Infinitely Extensible EPM Innovation 12
- 100% Customer Success 13
- Learn More 14



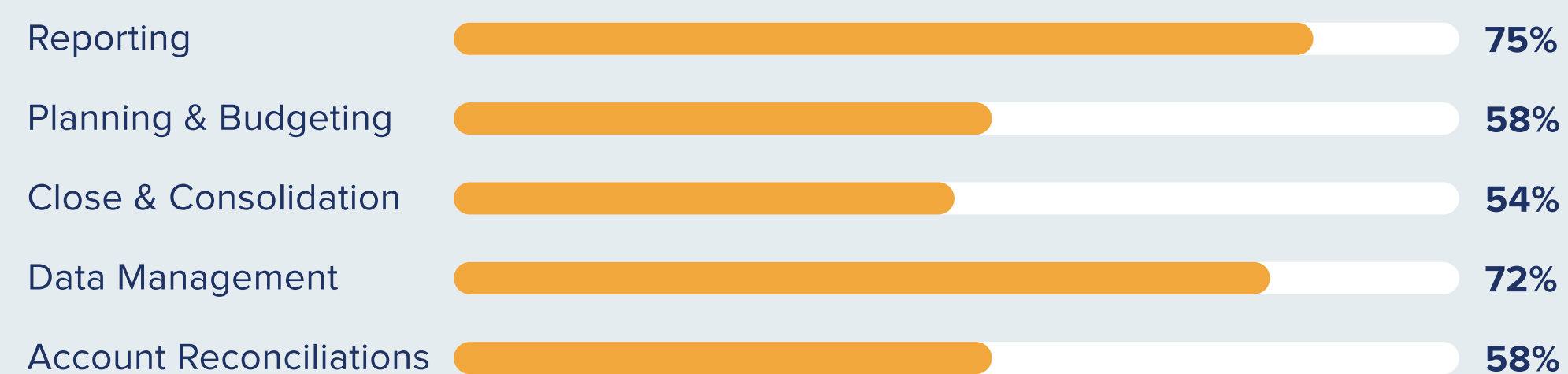
1 One EPM Solution Owned by Finance

Amplify the value of your investment in SAP with a single EPM Platform, 100% owned by Finance — one Solution, one point of integration, one interface and one source of truth.

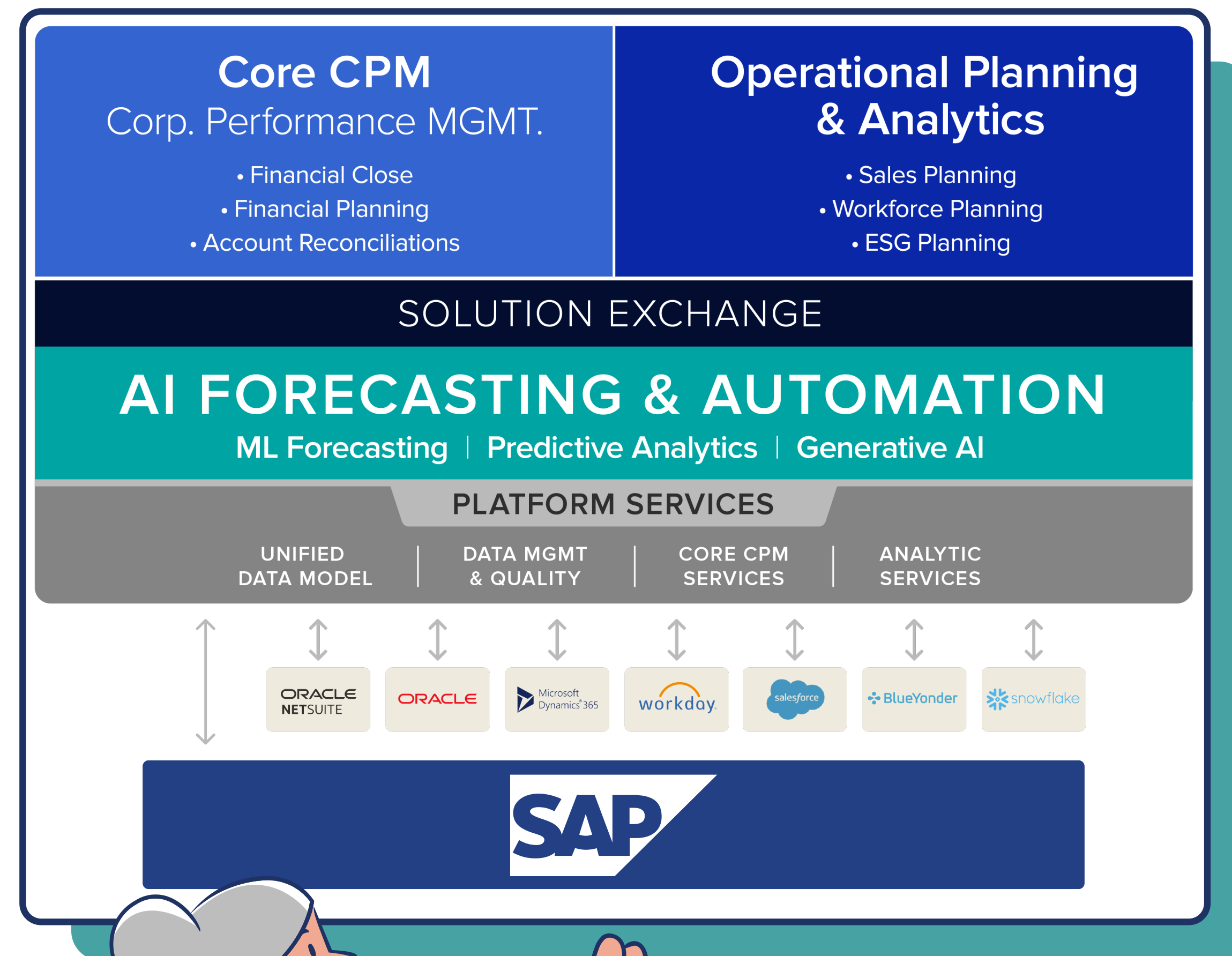
One Platform, One Source of Truth

- Easily adapt to change and optimize Close, Financial & Operational Planning and Reporting.
- Eliminate the complexity of multiple interfaces and integrations, cost and duplication of data and metadata, and time-consuming processes and upgrades.

Average Benefit Received



Deliver quick wins, ensure faster more accurate results, and **achieve an average benefit of 63.4%** over alternative solutions and approaches.



With prebuilt connectors to SAP, snap OneStream into your SAP Ecosystem and enable agility for Finance to optimize their EPM processes, but tightly integrated with the changes IT is making to adapt to the needs of the business.

2 Accelerate Time to Value

Optimize your move to SAP S/4HANA Cloud — regardless of where you are or how many ERP and other system instances you have. Gain immediate agility in EPM for close, financial & operational planning and reporting.

One Source of Truth

Finally achieve the elusive ‘one source of truth’ to get immediate value while sustaining your current requirements and designs for tomorrow.

Gain Value Faster

The full value of SAP Group Reporting cannot be achieved until implementation of SAP S4/HANA is finalized.

Recently, Nucleus Research published a report highlighting how **OneStream customers have reduced their financial close and planning cycles by up to 50% by implementing our platform.** (Source: Nucleus Research)

50%



Agility

One EPM platform to integrate regardless of how you rationalize ERPs, SAP S/4HANA migration and data landscape changes. And with built-in Financial Intelligence (an accounting brain), you get up and running quickly, with agility to not lose a step in your Close, Financial & Operational Planning and Reporting processes.



On average, our customers begin to see value from the OneStream platform two years before seeing value from SAP HANA. Since SAP HANA launched in 2015, SAP customers have completed only 14% of the transformation to SAP S/4 HANA. (Source: Basis Technologies, 2023)

3 Ultimate Agility

Future-proof investments made to rationalize ERP systems in SAP S/4HANA by taking the same approach to EPM — all within one platform and one point of integration, which provides the flexibility Finance needs to adapt to the business during the SAP S/4HANA journey.

Flexibility for Finance & IT to Adapt

OneStream is one platform for EPM that integrates seamlessly with SAP and other sources of data and metadata, keeping everything tightly coupled, and providing consistency and flexibility so Finance and IT can adapt to the needs of the business.

Dynamic Detail

Leverage OneStream's unique innovation, Extensible Dimensionality to deliver both operational relevance and adaptability across the business by flexing the level of dimensional granularity across business processes (Actual vs. Planning) and different lines of business.

Eliminate Complexity

This capability means users can see levels of detail adapted to their business, without exploding the number of products and hierarchies, maintaining complex security models, or falling back to Excel® for offline models — providing the ultimate flexibility to manage the business amid constant change.

“ We really wanted something that was finance-centric, not IT-centric, because we needed the flexibility to add accounts and update the system quickly for month-end close. And as we went through our decision criteria, nothing came close to what OneStream was offering.” (Source: OneStream Case Study: McCain)

Darryl Gerrow | Senior Manager of Corporate Financial Systems, McCain Foods



4 Finally, One Source of Truth

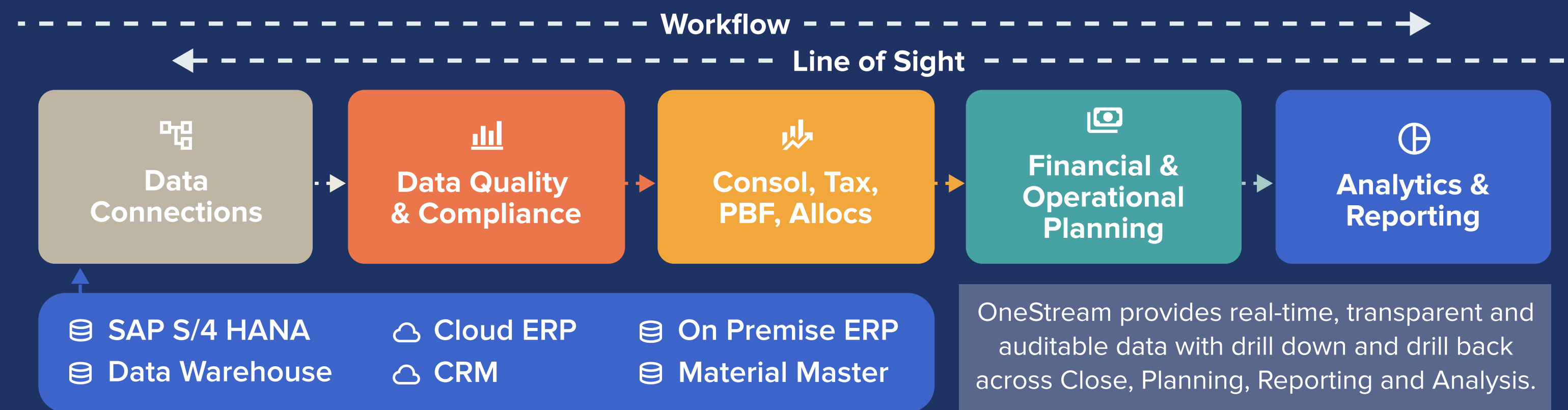
With prebuilt connectors to SAP, hundreds of successful SAP customers, and full transparency from balance to transactions, you can finally deliver on the elusive goal of one Source of Truth — maximizing your SAP investment.

- As data volumes and organizations become more complex, data quality processes are difficult to manage and control — not anymore.
- A prebuilt connector to SAP and a powerful built-in data quality and validation engine means you can snap OneStream directly into your current and future SAP ecosystem, and other financial and non-financials sources.
- Stop wasting time moving and reconciling data. Instead, start providing a strong, flexible foundation in data quality that's as real-time as you need, accurate, transparent with drill down and drill back to the source, and auditable across all Close, Planning, Reporting and Analysis processes.

“The ability to collect more granular data in OneStream facilitates better, faster business decisions and the confirmation rules built into OneStream ensure data integrity. With OneStream, we have more time available to spend analyzing data rather than updating data, and the flexibility of OneStream provides the ability to respond quickly to changing business needs.”

Senior Manager Financial Systems | Global Manufacturer

 **72%** Average efficiency saving based on time spent on data management



5 Optimize End-User Experience

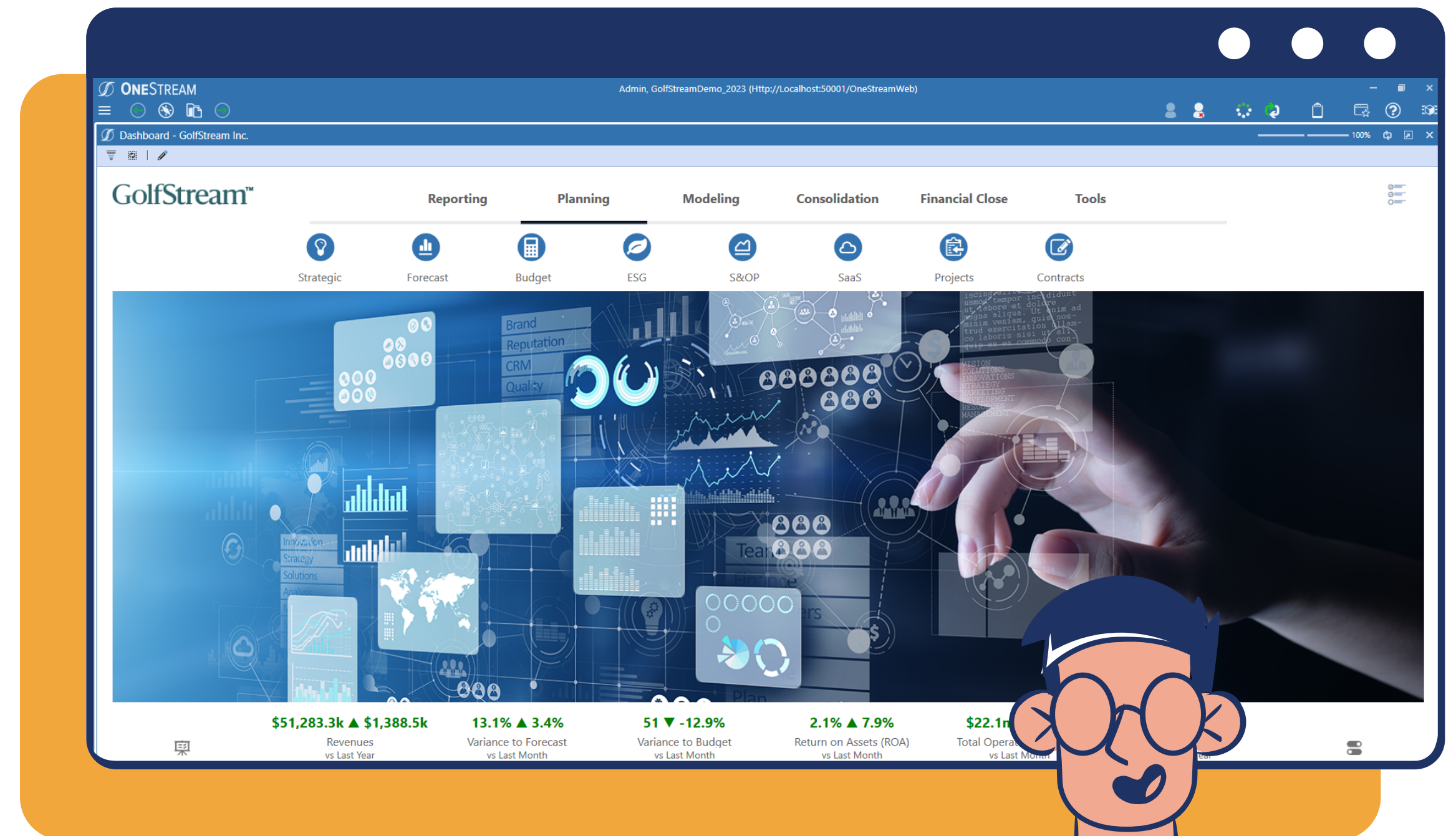
Optimize control and elevate trust with a simplified experience and guided workflows while accessing transactional insights from SAP ERPs and other sources.

Guided User Experience

Guided workflows and task management provide standard, defined and repeatable Close, Planning, and Operational Processes. This guides users through tasks in an intuitive experience, saving time, simplifying complexity and delivering results with confidence.

One Solution, One Interface

Having all processes in one solution ensures operational relevance and direct reconciliation across processes without jumping to another system or integrate and move data — delivering confidence and reliability in all business user-driven processes.



The OneStream Platform allows you to see actuals, plans, forecasts and variance reporting in one streamlined solution — eliminating the need to use multiple point solutions.

★★★★★ OneStream is a powerful, flexible, user-friendly, cost-efficient, long-term, platform.

“Fantastic. My team and I love the system, we have received top-notch support from our account manager and the other support staff, and we had the benefit of working with a perfect partner on integration. The platform has expanded our reporting and analysis capabilities in terms of the depth of information we’re able to provide and the speed at which this information is available.” (Source: Gartner Peer Insights)

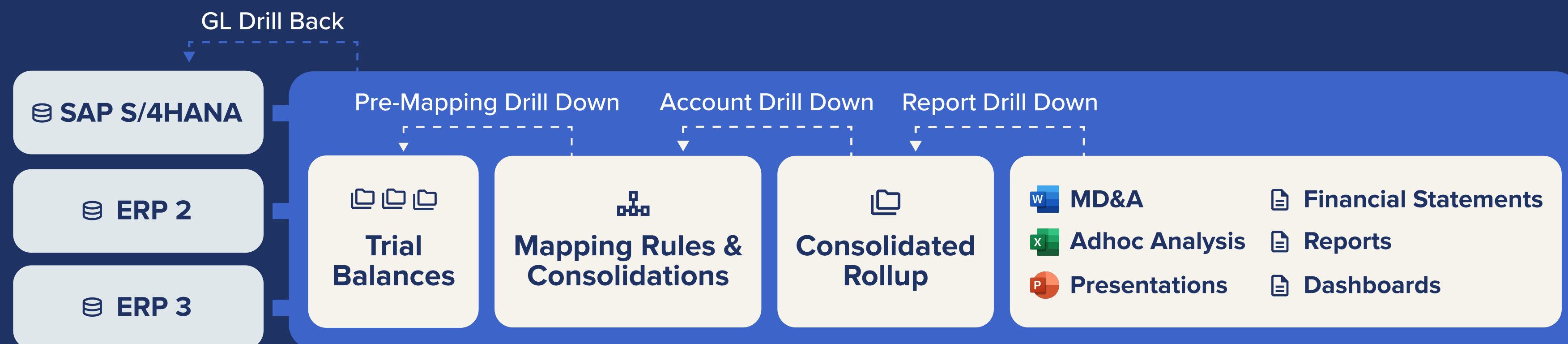
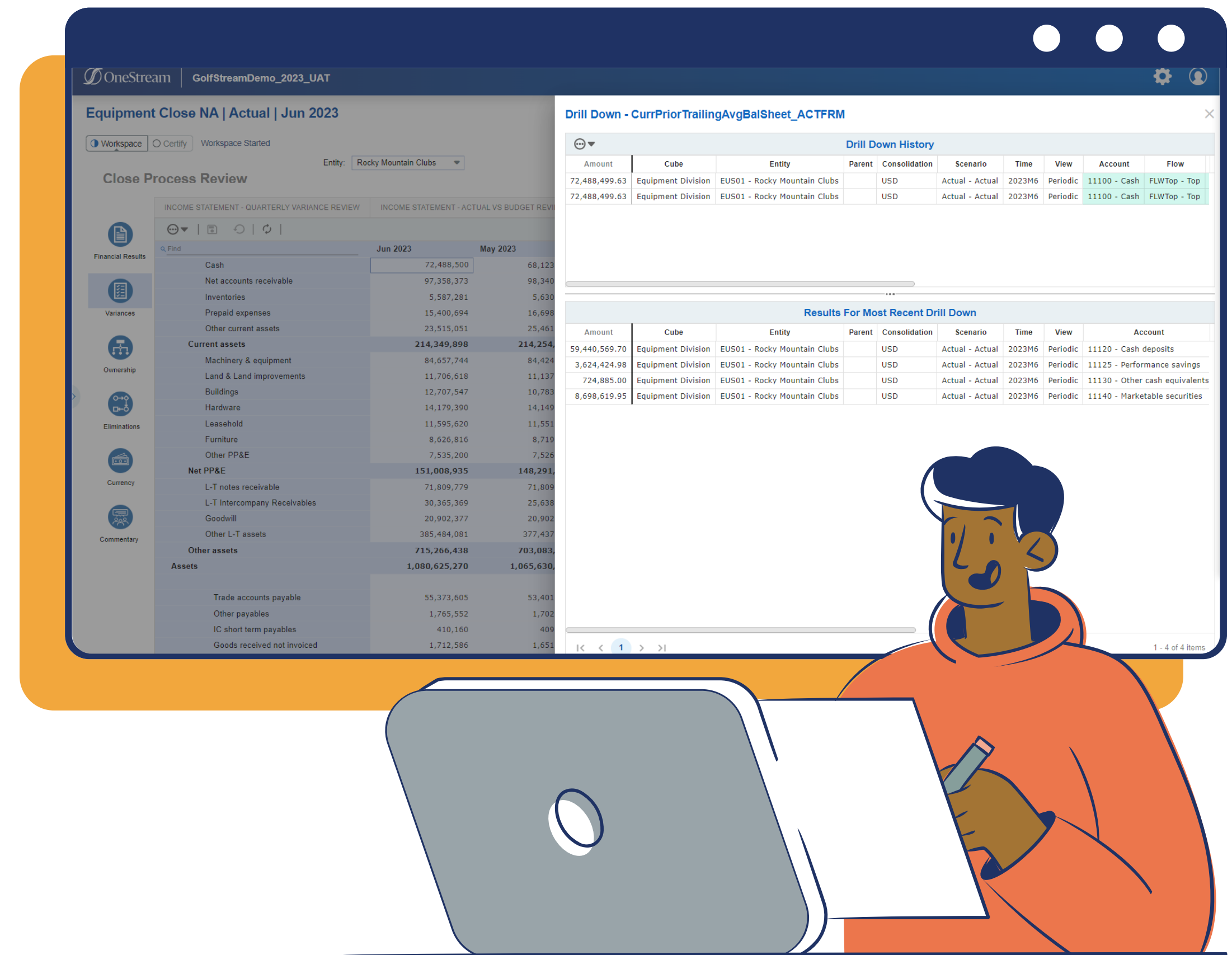
Gartner® and Peer Insights™ are trademarks of Gartner, Inc. and/or its affiliates. All rights reserved. Gartner Peer Insights content consists of the opinions of individual end users based on their own experiences, and should not be construed as statements of fact, nor do they represent the views of Gartner or its affiliates. Gartner does not endorse any vendor, product or service depicted in this content nor makes any warranties, expressed or implied, with respect to this content, about its accuracy or completeness, including any warranties of merchantability or fitness for a particular purpose.

Gartner
Peer Insights™

6 Transparency & Auditability

Maximize the visibility and auditability into data from SAP and other sources — no more struggling to get the actionable details behind any number.

- As data volumes and organizations become more complex, data quality and processes are difficult to manage and control - not anymore.
- With full data lineage for every number — from balance to transactional details — you can seamlessly drill down to supporting details, comments, documents and full audit trail, with drill back to details in SAP or any other source system.
- Delivering actionable visibility and analysis, traceability, transparency, auditability and trust behind every number.



OneStream provides real-time, accurate, transparent data with drill down and drill back across Consolidation & Close, Financial & Operational Planning, Reporting and Analysis.

7 Lower TCO

With one EPM platform to implement and maintain, achieve your goal of simplifying the application landscape and lower your Total Cost of Ownership (TCO).

Simplify Application Landscape

- Break the cycle of implementing and maintaining multiple solutions, technologies and tools with complex integrations across disparate solutions for Close, Financial & Operational Planning and Reporting.
- Reapply IT budgets and resources to other priorities to gain a lower overall TCO.

One EPM

- With only one EPM platform to maintain, you have the flexibility to adapt dynamically to the details and processes needed to unify the Close, Financial & Operational Planning and Reporting.
- Simplify technical complexity and streamline user experience with one interface, and one point of integration of all data and metadata.



Caribbean vacation specialist Sandals are saving

\$400,000 – \$500,000

a year to manage end-of-year consolidation and reporting. (Source: Diginomica, 2023) *Sandals*

“ OneStream’s Unified Financial Intelligence and Extensible Model helped Melrose to deliver maximum value to **corporate reporting along with operational value** to each diverse business unit. OneStream’s Guided Workflows and powerful consolidation and reporting engine offer a turn-key solution to business users and a lower TCO for group reporting.” (Source: OneStream Case Study: Melrose)

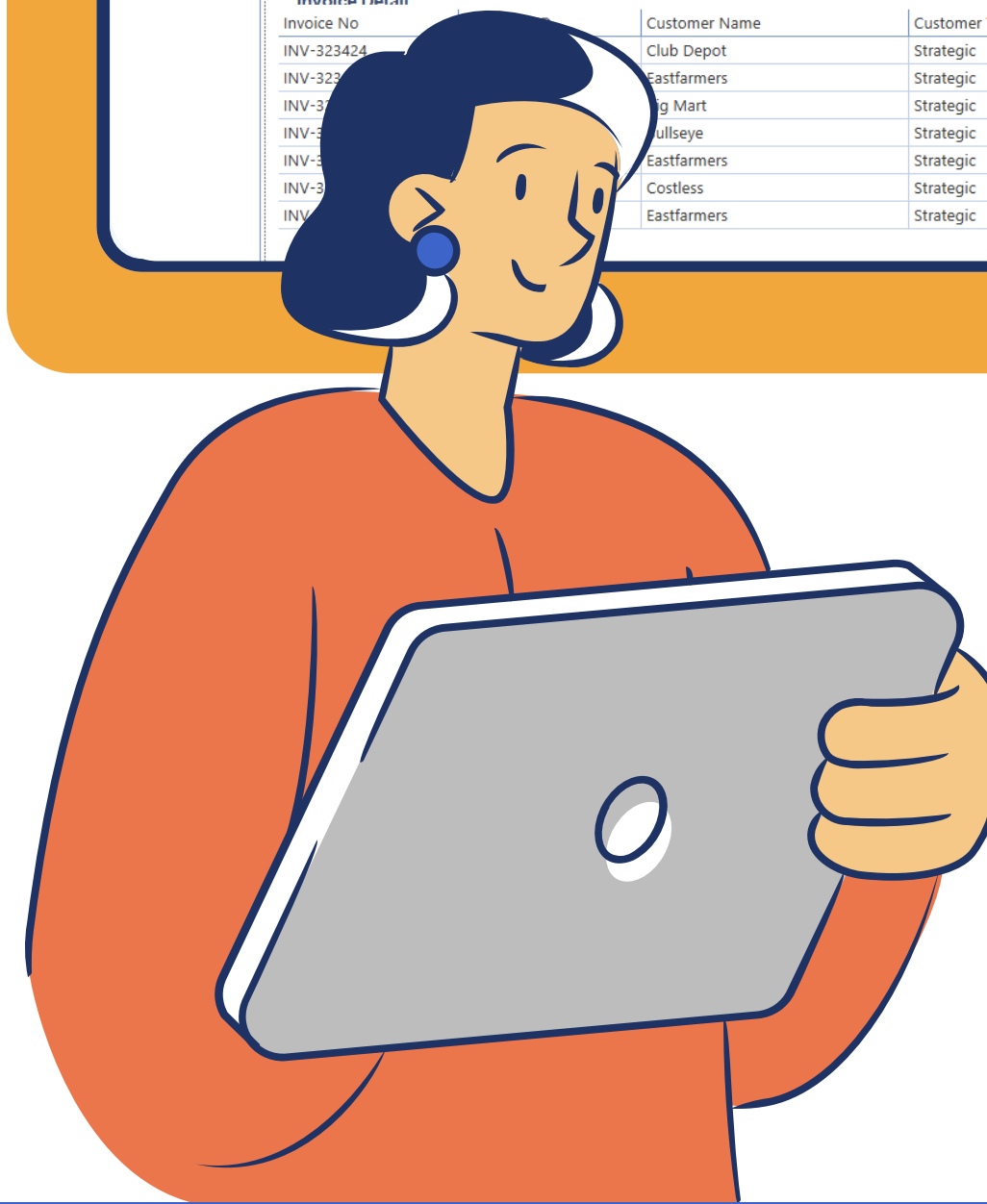
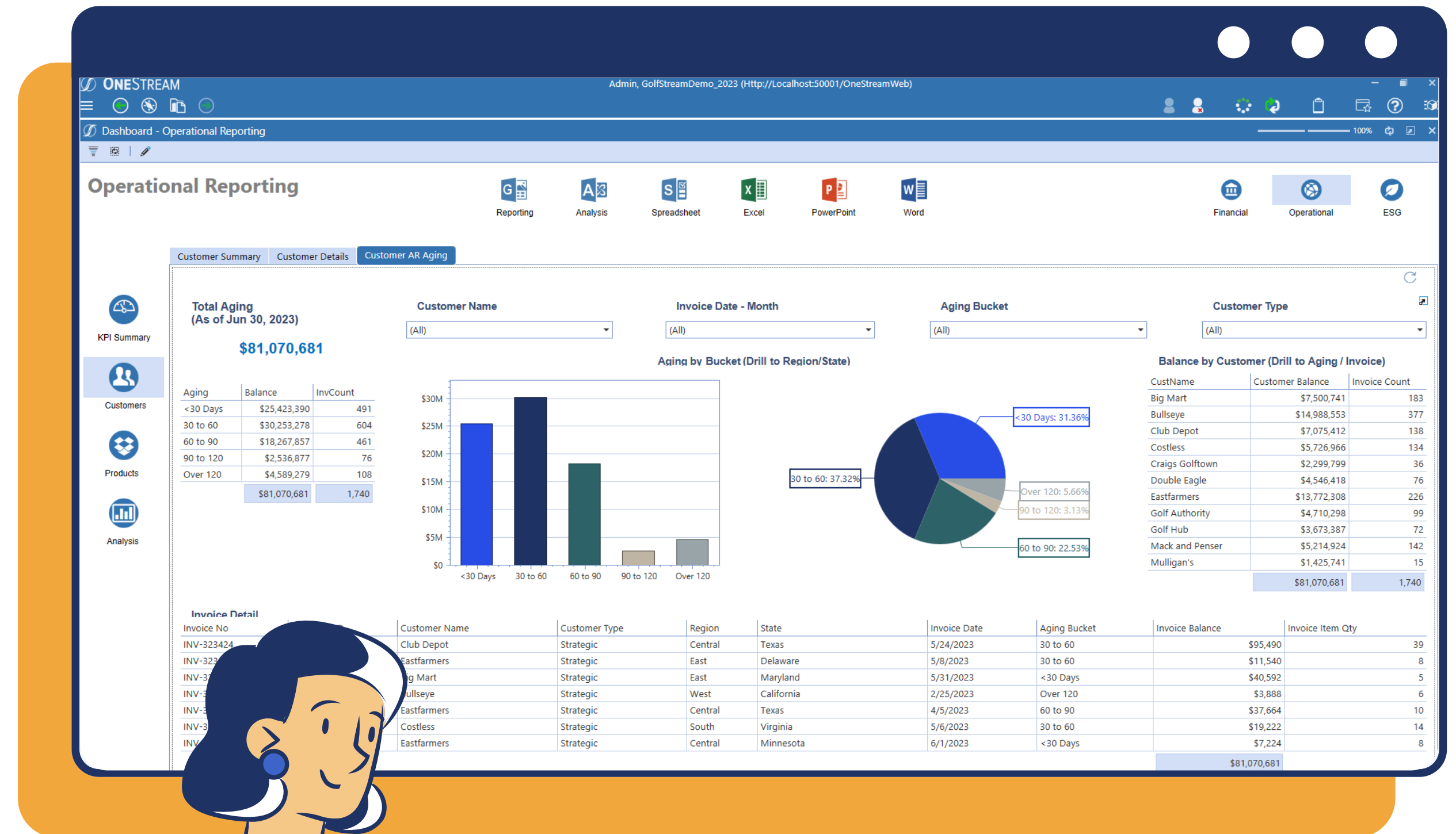
Jason Care | Group Systems Manager, Melrose PLC



8 Trusted Insights

Amplify your SAP investment by aligning enterprise performance, management reporting, operational planning and analytics in a single user experience agnostic to your ERP strategy.

- You can trust that Finance and Operations teams are looking at the same results with one Solution to access, report and visualize financial and high-volume operational details without requiring IT resources or external BI tools.
- Through built-in, self-service reporting, analysis, and ad-hoc reporting and analysis in Microsoft Office, You get speed-of-thought visibility, traceability, transparency, auditability and trust.
- Create dashboards, reports and analyze once — in one platform — from balance to transactional details, with drill down and drill back to deliver optimized financial and operational insights.



“The ability to quickly generate driver-based forecasts is essential to adapting to our changing business conditions. **Incorporating AI into our planning and forecasting** through the OneStream Sensible ML solution accelerates the forecasting process and further elevates it through more accurate ML data-driven forecasts.” (Source: OneStream Case Study: Polaris)

Melanie Hermann | Finance Process & Systems, Polaris



9 Simplify Maintenance

Reduce risk and technical debt in your EPM application landscape with one EPM platform that's deployed rapidly, tightly integrated with SAP, and simplifies maintenance for both Finance and IT.

Fully compliant Cloud

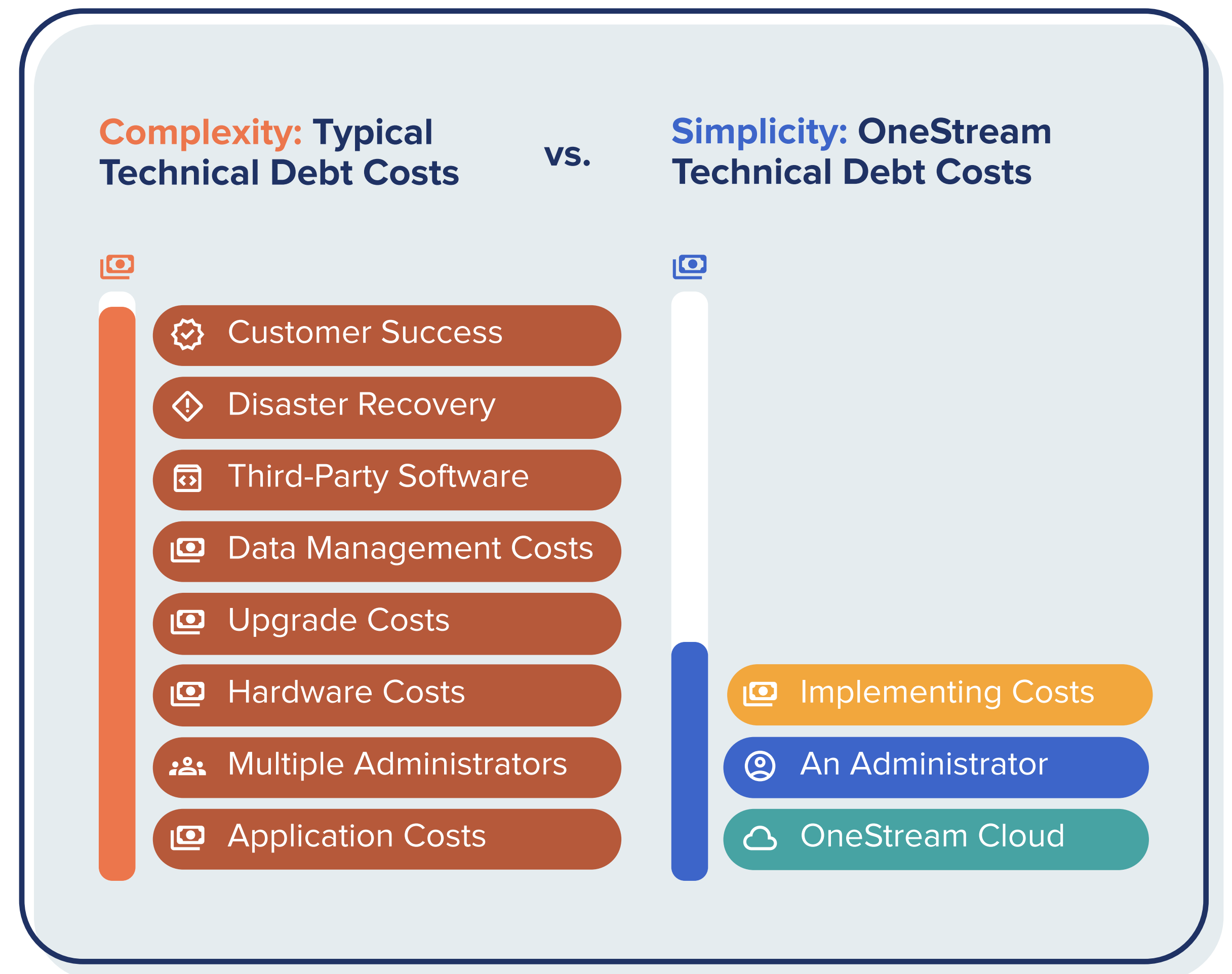
Fully compliant (SSAE, SOC, ISO and FedRAMP), secure, auditable, n-tier cloud architecture, with scalable compute and capacity to handle the speed of getting one solution up and running.

Streamlined integrations

With a built-in data quality engine and prebuilt SAP connectors, seamlessly integrate with SAP and other sources of data, to deliver reporting and analysis, from balance to transactional level, for all financial and operational processes.

Solution for growth

Rapidly upgrade, maintain, develop, download and deploy solutions on your timeline while reducing risk and technical debt over other solutions and approaches.



Typical Technical Debt Costs vs OneStream

“Ingeteam is a very dynamic company, hence the need for a more powerful and flexible platform that is easier to manage. After several sessions of contrasting needs with the potential of OneStream, Ingeteam were sure that they could achieve what they needed.” (Source: OneStream Case Study: Ingeteam)

Aitor Barrondo | Global Accounting, Audit & Controlling Director

Ingeteam

10 Infinitely Extensible EPM Innovation

Continuously extend the single platform with functionally relevant new capabilities, adapt to changing business use cases and maximize your business investment without adding more software or data stores.

- Access to an ever-growing library of solutions — not separate products or template examples you need to purchase, install, integrate, and maintain — means you can continuously extend OneStream with new capabilities, adapt to changing business use cases and maximize your investment.
- The OneStream Solution Exchange is like an app store, enabling customers to expand their OneStream investment with additional solutions and innovations such as Account Reconciliation and Sensible Machine Learning. Solutions are fully certified, supported and enhanced.



OneStream Solution Exchange



- ✓ Sensible Machine Learning
- ✓ Account Reconciliations
- ✓ People Planning
- ✓ Transaction Matching
- ✓ Task Manager
- ✓ Tax Provision



- ✓ Lease Accounting by AMCO
- ✓ Utility Bundle by BDA
- ✓ Drillit, Allocateit and Toolkit by Finit
- ✓ Automotive Planning Factory by Strategic IQ
- ✓ Dynamic Cash Flow by Spaulding Ridge



- ✓ CPM Blueprint
- ✓ ESG Blueprint
- ✓ Extensibility Relationship Analysis
- ✓ Data Schedule Manager
- ✓ Application Inventory
- ✓ OpenPlace Development Template

EPM is all we do — it drives our focus. This requires domain knowledge in every area of consolidation, close, financial and operational planning, reporting and analysis — from our founders to our employees around the globe with an average of more than 10 years of EPM experience — ensuring everything we deliver is focused on EPM innovation, not just a library of things you can download and try to figure out.

100% Customer Success

Want proof? 100% customer success is our mission, so speak to our customers about how OneStream has amplified their SAP investment.

- Don't take our word for it. Thousands of customers are available to provide you with insights into their selection process and how they accelerate value by using OneStream with their SAP environment by unifying Close, Financial & Operational Planning and reporting in One Solution.
- This drives everything we do, and we've done successfully, since our inception. Ask us to put you in touch with our customers from the beginning of your process, so you can be confident that OneStream can truly amplify your SAP investments.

★★★★★ Great Product Supported By Exceptional Customer Service

“OneStream customer service has been tremendous during and after implementation. Their desire to see customers get exactly what they are looking for is evident, and the many training and networking opportunities support this. OneStream does a great job in connecting prospective customers to existing customers, allowing for transparent sharing of information and experience.” [\(Source: Gartner Peer Insights\)](#)

Gartner® and Peer Insights™ are trademarks of Gartner, Inc. and/or its affiliates. All rights reserved. Gartner Peer Insights content consists of the opinions of individual end users based on their own experiences, and should not be construed as statements of fact, nor do they represent the views of Gartner or its affiliates. Gartner does not endorse any vendor, product or service depicted in this content nor makes any warranties, expressed or implied, with respect to this content, about its accuracy or completeness, including any warranties of merchantability or fitness for a particular purpose.

Gartner
Peer Insights™



1300+ Happy Customers

Our Mission: Delivering 100% Customer Success

OneStream is used by over 1,300 organizations and 190,000 users globally for Financial Close & Consolidation, Planning, Reporting, Analytics and more. In fact, 70% of our customers replaced multiple legacy applications such as Oracle Hyperion, SAP EPM and IBM Cognos.



How Can You Learn More About OneStream?

Check out our customer case studies and testimonials to learn why over 130 organizations have chosen to convert from multiple SAP EPM products to OneStream's unified platform — and never looked back!



Recognized Industry Leader



Our Customers



[CONTACT US](#)

[OneStream.com](https://www.onestream.com)
Sales@OneStream.com

Copyright ©2023, OneStream Software, Inc. All rights reserved.
OneStream is a registered trademark of OneStream, Inc.